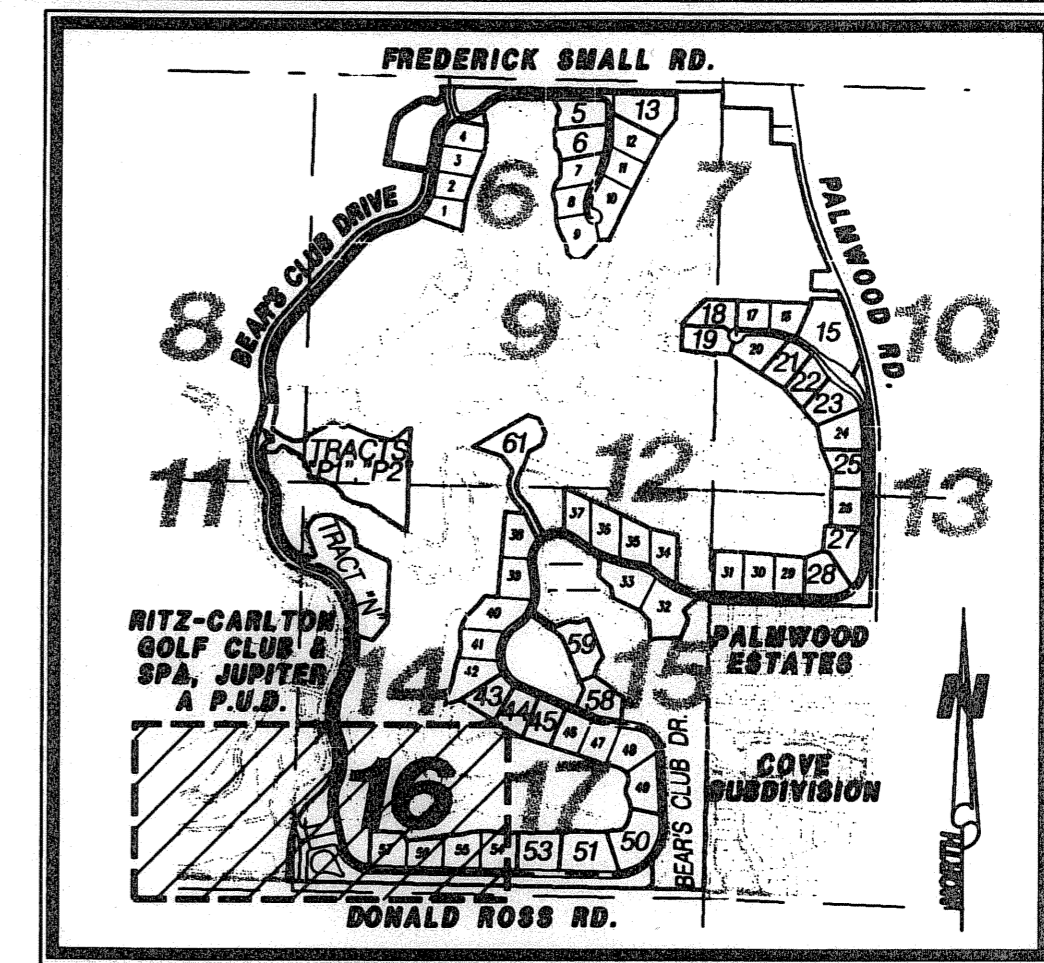


BEAR'S CLUB REPLAT, A P.U.D.

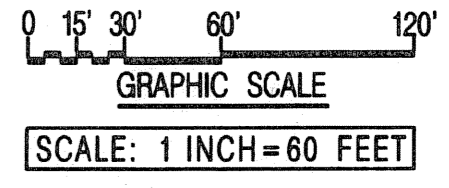
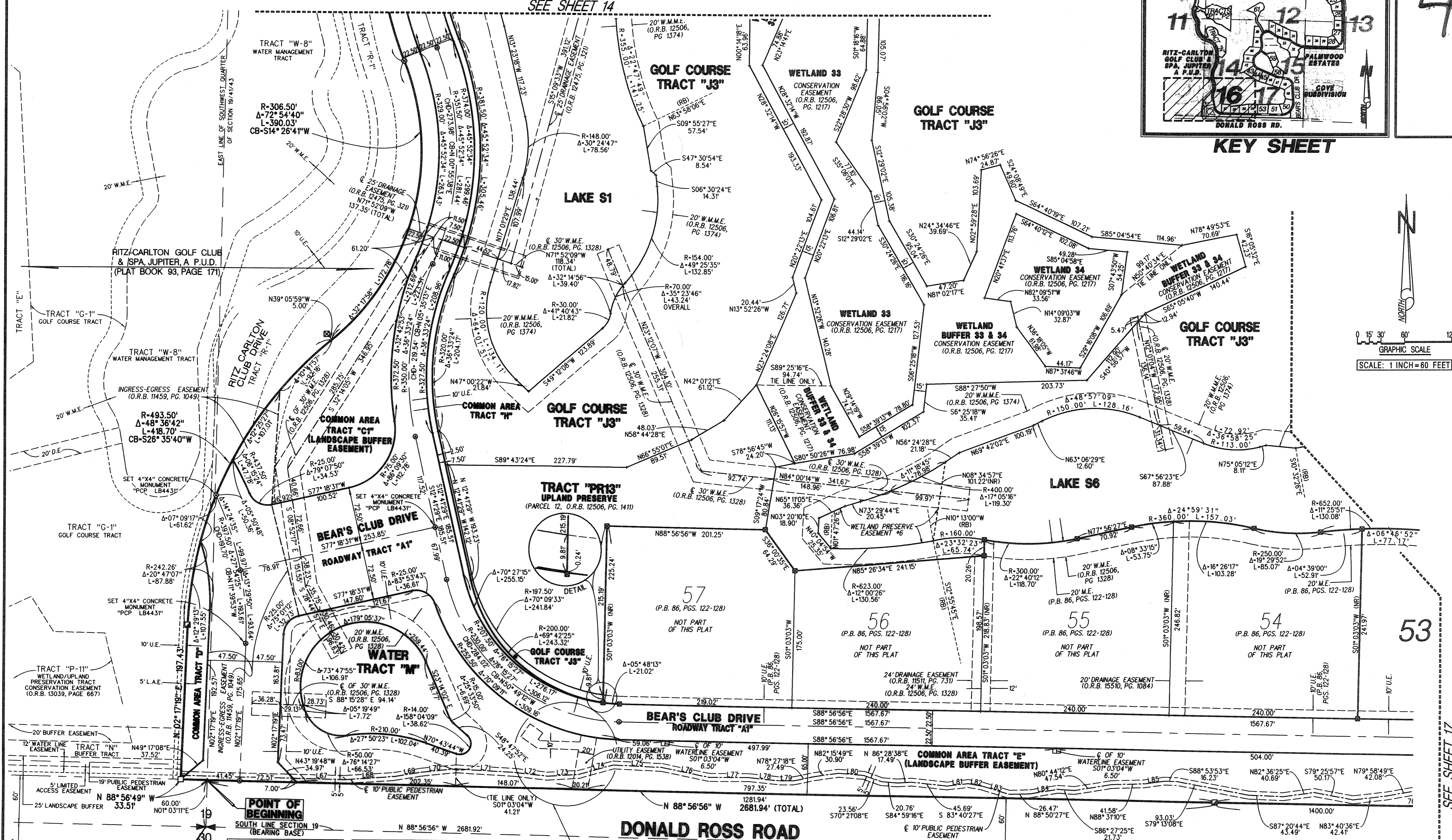
BEING A REPLAT OF A PORTION OF BEAR'S CLUB, A P.U.D., AS RECORDED IN PLAT BOOK 86, PAGES 122 THROUGH 128 AND A PARCEL OF LAND DESCRIBED IN OFFICIAL RECORD BOOK 11237 PAGE 75, ALL IN THE PUBLIC RECORDS OF PALM BEACH COUNTY FLORIDA, LYING IN SECTIONS 19 & 20, TOWNSHIP 41 SOUTH, RANGE 43 EAST, TOWN OF JUPITER, PALM BEACH COUNTY, FLORIDA

SHEET 16 OF 21 JULY 2005



48

KEY SHEET



LINE #	BEARING	DISTANCE	LINE #	BEARING	DISTANCE
L67	S 88° 56' 56" E	208.80'	L78	S 84° 02' 42" E	38.81'
L68	N 86° 11' 03" E	62.52'	L79	S 90° 00' 00" W	17.29'
L69	N 80° 42' 40" E	35.34'	L80	S 85° 16' 08" E	32.54'
L70	N 84° 02' 29" E	44.35'	L81	N 83° 05' 42" E	26.80'
L71	S 87° 00' 21" E	74.75'	L82	S 79° 25' 48" E	18.71'
L72	S 83° 39' 04" E	41.26'	L83	S 73° 02' 16" E	35.41'
L73	N 86° 20' 27" E	39.95'	L84	N 80° 41' 37" E	35.70'
L74	N 74° 11' 29" E	46.31'	L85	N 81° 51' 30" E	25.60'
L75	S 87° 23' 18" E	61.78'	L86	S 80° 22' 09" E	40.15'
L76	S 78° 19' 12" E	61.65'	L87	S 86° 59' 52" E	38.48'
L77	S 90° 00' 00" E	50.79'	L88	S 88° 08' 41" E	20.73'

POINT OF COMMENCEMENT
SOUTH QUARTER CORNER
SECTION 19/41/43
FOUND PALM BEACH
COUNTY BRASS DISC

DONALD ROSS ROAD
(ROAD PLAT BOOK 2, PAGES 145-146)

LIDBERG LAND SURVEYING, INC.
675 West Indiantown Road, Suite 200,
Jupiter, Florida 33458 TEL. 561-746-8454

CAD. K:\UST \ 194143 \ BEARCLUB \ 2090306 \ SHEET15.DGN	FB. PG.	JOB 00-209-306
REF. K:\UST \ 194143 \ BEARCLUB \ 2090306 \ 2090306.DGN		DATE JUNE 2005
FLD. B.D.		DWG. D00-209P
OFF. R.W. & E.C.	SHEET 16 OF 21	
CKD. D.C.L.		